

# BENTLEY® PROJECTWISE®



## A managed environment for AEC and geospatial content

Bentley ProjectWise provides managed access to AEC and geospatial content within the workgroup, across a distributed organization, or among collaborating organizations. By working within the Bentley ProjectWise managed environment, AEC and geospatial professionals can streamline their project work and improve the efficiency of their operations.

Since Bentley ProjectWise was designed specifically for content created, viewed, and used in AEC and geospatial workflows, it effectively manages the complex relationships between shared design and map files, the information they contain, and any associated content. With Bentley ProjectWise, users can effectively manage change during project work and in their operations.



Designed to meet the complex needs of managing and delivering today's AEC design content.

### Integration with Existing Workflows and Applications

MicroStation® and all of Bentley's discipline-specific applications are directly integrated with Bentley ProjectWise, along with AutoCAD® and many other AEC applications. This integration allows files to be quickly accessed, checked out for use, and checked in directly from the application, ensuring that the managed environment becomes an essential addition to your existing workflows. MicroStation users can also assign workspace profiles to documents or folders so that specific workspaces are associated with a session when MicroStation is launched.

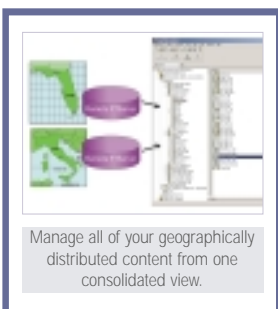


Provides authorized users fast access to the latest project information.

### The Hub for Bentley's Managed Environment

Bentley ProjectWise is the central indexing server for Bentley's managed environment, providing the integration point for all content managed by Bentley® Publisher™, Digital InterPlot™, and Bentley's other collaboration servers. This architecture ensures that any server added to your content management and publishing solution is tightly integrated and contributes to your current deployed environment.

Remote Bentley ProjectWise users can store their content on a local server to take advantage of fast local access. At the same time, all content in Bentley ProjectWise is visible to and managed by the central administrator.



Manage all of your geographically distributed content from one consolidated view.

### A Scalable Environment

Bentley ProjectWise provides you with flexible installation and configuration options, so that you scale to meet workgroup or geographical workload, or add Bentley Universal Client Licenses to expand user access. With a managed environment, you can leverage Web access to facilitate distributed workflows and collaborative viewing and redlining of AEC and geospatial content.

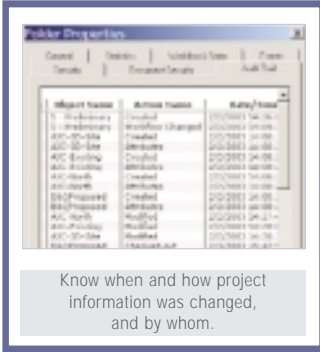
### Secure Management of AEC and Geospatial Content

Your AEC and geospatial content is essential to your projects and your operations, and with Bentley ProjectWise, you can manage, protect, and distribute it securely and reliably. There are multiple levels of security starting at the document storage area, which give individual users or groups appropriate access rights to project folders and specific workflow states of project documents. Each user is uniquely identified in the Bentley ProjectWise database and assigned a password to the system. User groups can be established to streamline access rights management. To further simplify user access administration, Bentley ProjectWise can import and synchronize with users from the Windows domain. Passwords can even be maintained in Windows and authentication can be performed by Windows rather than by Bentley ProjectWise, if preferred. All communication between Bentley ProjectWise server components and with the Bentley ProjectWise Explorer client can be encrypted using standard Secure Socket Layer encryption.



Visit us on the Web for more information about Bentley solutions and services.  
[www.bentley.com](http://www.bentley.com)

## BENTLEY PROJECTWISE AT-A-GLANCE



### Workflow management

- User-defined states in the project progression
- User and group access privileges assigned by state
- Automatic notification by E-mail or ProjectWise message when actions occur on documents
- Automatic generation and distribution of document renditions at milestones

### Security

- Individual and group access rights
- Access management by folder or document with inheritance
- Synchronization with Windows domain users
- Optional authentication of users by Windows
- Secure Socket Layer (SSL) encryption

### Audit Trail/Change Management

- Logs of all actions on documents and folders, including deletion
- Ability to view roll-ups of actions by folder or projects
- Option to prompt users for comments
- Ability to filter reports by user, action, date, or time
- Ability to view changes between versions of design data graphically, including DGN, DWG, and DPR files

### Powerful Searches

- Form and custom "Search Builder" interfaces
- Boolean-type searches on all fields
- Case-sensitive option
- Custom folder views provided by saved searches
- Creation of global and user-specific saved searches

### Content Management

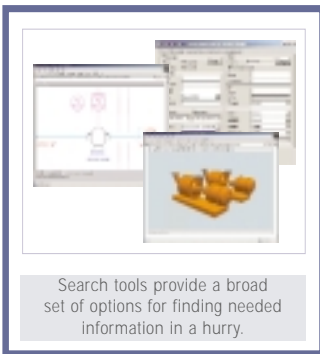
- Automated indexing of components
- Central view of properties of indexed components
- Listing of all documents associated with a component
- Two-way navigation between component index and related files
- Automatic creation of 3D publishing
- Optional manual association of related files with components

### Distributed Architecture

- Ability to maintain single central index of documents
- Ability to store files on local servers to save bandwidth
- Ability to provide Web-based access to documents

### Unicode Database

- International language support



## BENTLEY PROJECTWISE SYSTEM REQUIREMENTS

### Bentley ProjectWise Server

- Processor: Pentium® II Processor
- Operating System: Microsoft® Windows® 2000
- Memory: 256MB
- Software Requirement: Internet Explorer 5.5 or higher (including WebFolder Support)

### Bentley ProjectWise Client Workstation

- Processor: Pentium Processor
- Operating System: Microsoft XP Professional, Microsoft Windows 2000, Microsoft NT® 4.0
- Memory: 64MB
- Software Requirement: Internet Explorer 5.5 or higher (including WebFolder Support), Support for Java™ 2 runtime environment 1.4 (Web Explorer client)

## CALL TODAY FOR MORE INFORMATION

Bentley Systems, Incorporated, is a global provider of collaborative software solutions that enable our users to create, manage and publish architectural, engineering and construction (AEC) content. As a part of those solutions, Bentley provides professional services including implementation, integration, customization and training.

Visit us on the Web for more information about Bentley solutions and services. [www.bentley.com](http://www.bentley.com)

### Bentley North American Headquarters

Bentley Systems, Incorporated  
685 Stockton Drive  
Exton, PA 19341 USA  
Phone: +1 800 BENTLEY (+1 800 236 8539)  
Outside the US +1 610 458 5000  
Fax: +1 610 458 1060

### GeoModeling

Ilica 191F  
HR-10 000, Zagreb  
CROATIA  
tel: +385-1-3775-411  
fax: +385-1-3775-412  
[info@geomodeling.hr](mailto:info@geomodeling.hr)  
[www.geomodeling.hr](http://www.geomodeling.hr)

To find a local Bentley office, please visit [www.bentley.com/corporate/contacts](http://www.bentley.com/corporate/contacts).

